

Late Night Levy Annual Report

Levy Year: 1 November 2022 to 31 October 2023

BACKGROUND

1. Islington Council adopted the Late Night Levy on 1st November 2014 and from that date any licence holder permitted sell alcohol after midnight is required to pay the levy. All income raised by the levy must fund activities that benefit the late night economy.
2. By law the council is required to give 70% of the income raised by the levy to the Metropolitan Police with remaining 30% retained by the council to fund activities that benefit the night time economy. In Islington, the Council, Metropolitan Police and MOPAC have agreed to pool levy income to fund Operation Nightsafe.

OPERATION NIGHT SAFE

3. The aim of Operation Night Safe is to support and promote the late night economy in Islington by:
 - providing a safe, welcoming night time environment for residents, workers and visitors
 - reducing late night alcohol related crime, disorder, antisocial behaviour and nuisance
 - minimising negative impacts on local residents
4. Operation Nightsafe funds three distinct, but complementary, elements:
 - The provision of two dedicated police officers to coordinate night time economy policing, using information and intelligence, and to carry out follow up support and enforcement activities
 - Funding 2 dedicated police officers to police the Night Time Economy every Friday and Saturday night, this is called as Operation Leuctra
 - The provision of a high visibility street based patrol service, operated by Parkguard Ltd, 4 nights per week with the capacity to provide assistance

to licenced premises and members of the public in need.

POLICE ACTIVITIES

5. The Late Night Levy funds:

- a dedicated police sergeant to act as a Night Time Economy Coordinator
- a dedicated police constable to work on operational night time activities, and lead on day time follow up and engagement activities

6. Night time policing is carried out by officers drawn from neighbourhood, emergency and special police constabulary teams. The Night Time Economy Coordinator is responsible for collating intelligence and using this information task and brief officers prior to deployment ensuring that resources target hotspot areas, problem-solving activities and call response. The police utilise various tactics including high visibility pulse patrolling, visiting licenced premises, using of passive drugs dog, taxi-touting operations and CCTV targeted patrols. Funding the Night Time Economy Manager has enabled capacity building resulting in improved consistency and effectiveness of policing the night-time economy particularly in relation to investigation, linking in with CID and reporting issues of concern for day time follow up by Police Licensing Officers.

7. During the day the dedicated police officers focus on:

- reviewing crime reports connected to late night licenced premises and taking appropriate follow up action
- working with licenced premises to promote and share best practice
- dealing with problematic premises using a range of tools from action planning to reviews
- preparing and delivering briefings for Operation Leuctra
- briefing and training staff working in late night venues or matters that can reduce crime and improve safety in the night time economy such as 'Ask

Angela', Welfare & Vulnerability Engagement (WAVE) and preventing drink spiking

OPERATION LEUCTRA

8. This new initiative, that started in early 2022, is co-ordinated by Islington Police Licensing team.
9. The aim is to reduce violence, robbery and drug offences in the NTE areas identified as having the highest crime rates brings together uniformed Police Officers, plain clothes officers, Operation Nightsafe team, Local authority officers and venue security staff.
10. Officers are deployed to these known hotspot areas each Friday and Saturday night. The Police Licensing team hold a street briefing every Saturday night at various points across the borough. Venue management and security are invited to attend along with Police officers and Operation Nightsafe officers to share information and discuss current crime trends. This has proved to be an excellent method of promoting partnership working and creating a 'one team' approach to tackling crime and disorder.
11. The Late Night Levy has providing match funding to cover the cost of two police officers working Fridays and Saturdays since April 2022. The police fund the additional 2-5 police officers deployed each weekend or Operation Lecutra.
12. Appendix 1 provides a summary of police activities in 2022/23

OPERATION NIGHTSAFE PATROL TEAM

13. The Late Night Levy funds the Nightsafe Patrol Team, a four person, police accredited, street based tasking team provided by Parkguard Ltd. The team operates four nights per week, usually Thursdays to Sundays and covers the whole borough with locations of work being determined on a nightly basis by intelligence lead tasking, call response and police lead briefings. The Nightsafe Patrol provides:

- a rapid response to requests for assistance from licence holders paying the late night levy
- an early intervention style of approach to minimise demands on the emergency services
- medical and police support where needed
- assistance to members of the public in need
- enforcement action against offenders
- high visibility patrols

14. The service is unique in that it has filled significant gaps in the management of the night time economy in Islington. The dedicated street based patrol team, resourced by 4 regular officers, provides an early intervention style approach by responding to low level, potential or emerging problems. By engaging with people on the street, supporting door staff dealing with difficult customers and providing a rapid response to licence holder requests for assistance the Nightsafe Patrol Officers interventions invariably prevent escalation requiring emergency services support.

15. Another gap filled by Nightsafe Patrol officers is their ability to help vulnerable people, many of whom are temporarily vulnerable due to the effects of alcohol. Typical activities have included providing welfare checks and personal safety advice, calling taxis, providing a temporary safe haven, first aid or medical assistance. One officer per shift is trained in first aid to 'first on the scene level' and their skills have been utilised on many occasions to assist a casualty until the ambulance service arrives.

16. The Operation Nightsafe Annual Report is in Appendix 2

NIGHT TIME ECONOMY CRIME DATA

17. Crime Data is attached as Appendix 3

FINANCIAL INFORMATION

18. The Financial Report is attached as Appendix 4

Islington Late Night Levy

Police Licensing team summary

2023

Police Licensing Team

Remains at 1 Sergeant and 4 Constables. 2 of these posts are funded by the LNL.

7 days a week coverage. 1 Licensing officer works a night shift each Friday and Saturday to cover the NTE and to coordinate resources including Op Leuctra officers and the Op Nightsafe team.

NTE resources

Operation Leuctra is the NTE Policing plan for Islington. This operation is led by the Police Licensing team and is joint funded by LBI and Police.

The operation sees officers deployed on a Friday and Saturday night from 10pm to 6am. The officers are tasked with patrolling the crime and ASB hotspots within the NTE.

The Operation Leuctra officers work closely with the Nightsafe team.

A street briefing is held every Saturday night with locations changing to allow nearby venues the opportunity to attend on a regular basis. The briefing, led by the Licensing Team is delivered to venue management, Police resources and Nightsafe resources. This is a really useful way to bring key partners together for a short information sharing exercise ahead of a busy Saturday night.

The role of the Licensing Officer over the weekend NTE period is to conduct visits to licensed premises to ensure compliance with conditions. These regular visits ensure venues are operating responsibly to reduce risk of crime and disorder. Officer is on hand to provide advice when incidents do occur and collect evidence so that we can work with venues to prevent reoccurrences. Engagement is always our first step before enforcement.

Visits to licenced premises

1488 (Licensing Team Officers)

Licensing applications dealt with by Police

Upon receipt of applications, the police team regularly lodge representations, requesting that the applicant accept additional conditions designed to promote the licensing objectives. When Police and applicants are unable to reach an agreement on these conditions, Police attend committee hearings to ensure these conditions are imposed.

698 applications dealt with over the 12 month period

Police agree additional conditions on an average of 12 applications PM

Reported Crimes in licensed premises

Data to be provided by Matt Bunce, LBI.

Police Licensing team have reviewed 3501 crimes

Recent work by the team

- Operation Leuctra

As outlined above, Op Leuctra is the Policing plan for the Islington NTE which is organised and led by the Licensing team. This op brings partners together from LBI, Police, Op Nightsafe along with Police teams from other boroughs. The operation runs every Friday and Saturday night. Op Leuctra summary provided in additional document.

- Joint operation with SIA

Friday 11th August. Licensing team worked with enforcement officers from SIA and LBI Licensing officers. Visits to licensed venues that employ door supervisors. Checks to ensure that the door supervisors are correctly licensed and working as expected by the SIA.

18 venues were checked. Out of all the visits completed, two had staff incorrectly displaying badges that were borrowed or expired. Both males were sent home and SIA will follow up with action

- Club Bonbon appeal. Decision defended

In June 22, Police applied to Islington Local Authority for a review of the premises license at Club Bonbon. The review was called owing to a continued failing by the management of the venue to uphold the licensing objectives. Despite numerous attempts by Police to engage, the venue continued to fail to operate to the required standard.

Having reviewed the evidence presented, the licensing committee directed that the licence be revoked owing to the continued breaches and failures.

The venue appealed this decision. Police submitted further evidence to the council in support of the decision.

On 25th April 23, the appeal was heard at Highbury Corner Magistrates Court. The court dismissed the appeal resulting in the permanent revocation of the licence at Club Bonbon.

- Higher risk events managed

The Licensing Team have played a key role in planning for and managing high risk events throughout the year. These events include New Year's Eve, Notting Hill Carnival, Arctic Monkeys Concert and Oktoberfest.

Drink Spiking

<https://www.met.police.uk/police-forces/metropolitan-police/areas/campaigns/2022/spiking/>

Op Rana is the Mets plan to reduce drink spiking offences. In Islington we are currently working with our venues to distribute crime prevention / awareness material to venues. We have engaged with all venues where there have been drink spiking allegations and are now targeting all late night venues on the borough that may be vulnerable to such crimes. See attached image of the mirror stickers with QR code. Venues provided with information and advice on preventing offences and dealing with allegations.

119 venues now have the material as of December 2023



Wave training

<https://www.safersounds.org.uk/wave>

Wave (Welfare and Vulnerability Engagement) training delivered by Islington Police Licensing team.

The training focuses on preventing harm to vulnerable women within the NTE, Ask for Angela and Drink spiking.

Training material and crime prevention material provided to attendees.



422 public facing venue staff trained as of December 2023

Best practice scheme and Licensing SAVI

The Police team are working with colleagues from the Council Licensing team to encourage venues to sign up to Islington's Best Practice Scheme. This scheme provides a standard for venues to meet in order to be awarded best practice status.

Licensing SAVI is an external scheme which operates nationally. L SAVI complements the local scheme and venues may wish to consider joining both schemes to ensure they are operating to the highest and safest of standards.

Women's Night Safety Charter

<https://www.london.gov.uk/programmes-strategies/arts-and-culture/24-hour-london/womens-night-safety-charter>

The Women's Night Safety Charter was launched by Islington Council in partnership with Islington Police on 29th November 2019. The charter was intentionally launched to tie in with the Christmas party safety campaigns, aimed at reducing the risk of harm during a period where the NTE significantly increases. The WSC is a hugely important campaign aimed at safeguarding women within the NTE. Targeting both NTE users and venue staff to raise awareness of issues and put in place tools to allow women to quickly highlight concerns. We have encouraged venues to regularly refresh training so staff are constantly aware and actively looking for situations where an intervention should be made.

Since the initial campaign was launched, we have found that licensed venues across the borough have been receptive and keen to work with us to protect women from harm. The training is regularly refreshed.

Additional in person training has been provided at Islington Town Hall. Again this training was aimed at refreshing the knowledge originally provided and reaching out to new staff. This training was provided to 65 venues over the 2 days.

The Police licensing team have linked in with the University teams. Police officers have provided safety briefings to student coming back to university and to Freshers. These briefings now include advice to protect against drink spiking and promote the A4A campaign.

The Police team have circulated the WAVE training and Ask for Angela material to all licensed venues on the borough. The Police team strongly support the WSC and promote WAVE and A4A at every interaction we have. Operation Nightsafe have been working with the team to distribute the new A4A material to licensed premises.

Where incidents do occur, the Police team work closely with venues to identify any shortcomings and ensure that measures are immediately put in place to prevent a repetition. In one particular case we have successfully had a licence revoked owing to an incident of sexual assault where the venue failed to safeguard the female customers.

In addition to WAVE and A4A, Fabric and XOYO also operate a 'Don't be a creep' campaign. This campaign seeks to highlight the issue to male customers.

The work carried out promoting the WSC has no doubt made the NTE a safer place for all and hopefully given women the confidence to enjoy a night out without fear of harassment or assault. There is no doubt that further work is needed to continue with the success seen so far. The Police are committed to working with partners to make Islington NTE a safe environment.

Islington currently has 76 venues signed up the charter. Refresher guidance was distributed to venues in December 2023. See attached hand out.

SEXUAL HARASSMENT AND ASSAULT IN LICENSED SPACES
Staff Information · Understand · Respond · Prevent

WHAT DO WE MEAN BY SEXUAL HARASSMENT?
It's a range of unwanted behaviours which could include: following · staring · leering · shaming · creepy comments or actions · flashing · not taking 'no' for an answer · comments about a person's actual or perceived gender or sexuality · taking photos without consent · predatory behaviour targeting drunk or high people · invading personal space · catcalling.
It can be one-off or repeated and is best defined by the person experiencing it.

WHO DOES THIS HAPPEN TO?
Anyone of any gender can experience it but research shows perpetrators are most likely to be men, and victims most likely to be women. LGBT+ and gender non-conforming people are often targeted.

WHAT'S OUR POLICY?
Read and follow the best practice Good Night Out policy, which is to eject those who harass or assault, provided you are satisfied that the targeted person will not be further harmed as a result. Check in with them and never assume!

..AND SEXUAL ASSAULT?
Sexual assault is the sexual touching of one person by another without a reasonable belief in that person's consent, and could include groping, grabbing, or rubbing up on someone.
These behaviours are unlawful under the Sexual Offences Act 2004, Equality Act 2010 and Public Order Act 1986.

CONSENT AND THE LAW
Consent means a person agrees to something by choice, and has the freedom and capacity to make that choice. If they feel pressured, scared or threatened, then they are not free to consent.
If someone is very drunk or drug-affected then the law says they are not capable of giving consent.

HOW SHOULD I RESPOND?
The first thing you say is vital. Try this failsafe opener:
BELIEVE - "I'm sorry that happened here"
VALIDATE - "That is not okay"
EXPLAIN - "I'm going to see what I can do to help."
CHECK you've understood what you've been told
ASK about any physical injuries or urgent needs
Then pass up to a manager immediately.

RECORD KEEPING
Record all incidents and reports, no matter how minor, in your incident book. This helps others to keep up to date with issues and repeated behaviours from patrons. Keep your notes clear and stick to facts not opinions.
You can also ask for and record the name of any patron while they are on the premises, but they have the right to refuse to give this info.
Don't hesitate to call 101 or 999 in an emergency, but remember the targeted person may prefer not to speak to the police. That is their choice.

WE SUPPORT THE INTERNATIONAL GOOD NIGHT OUT CAMPAIGN

IF SOMETHING OR SOMEONE MAKES YOU FEEL UNCOMFORTABLE, NO MATTER HOW MINOR IT SEEMS,

GOOD NIGHT OUT

YOU CAN SPEAK TO ANY MEMBER OF STAFF AND THEY WILL WORK WITH YOU SO IT DOESN'T HAVE TO RUIN YOUR EXPERIENCE.

We want you to have a
GOOD NIGHT OUT
Our team has been specially trained to listen and support you

www.goodnightoutcampaign.org
@goodnightoutcampaign
@goodnightout

www.goodnightoutcampaign.org
@goodnightoutcampaign
@goodnightout

Endorsed by **drinkaware**
Good Night Out Campaign
Partnership between Drinkaware & Goodnight Out

Licensing panels

Police continue to use Licensing panels as a means of dealing with issues within venues where engagement and improvement is needed. These panels are held at the council offices with representatives from the council and Police present. Actions are agreed in the hope that this intervention negates the need for more formal enforcement action. To date these panel have proven to be extremely effective at resolving issues within venues. 22 Licensing panels were held in 2023.

Adopt a pub

A new scheme implemented recently to deal with venues which have the highest recorded crime levels. Each venue is allocated a Safer Neighbourhood officer who will work with the Police Licensing team to engage and support the venue in reducing crime. The top 7 venues have been allocated officers. The crime levels are normally made up of theft offences.

Pub watches

2 active pub watches currently operate within the borough

Angel

Arsenal

Plans underway to start schemes in the Bunhill and Clerkenwell areas.

PS Neil Fraser

Islington Police Licensing team

22/02/24

Operation Leuctra – Policing Islington’s Night-time economy

Summary of Operation 2023

Operation Leuctra is an operation aimed making Islington’s weekend night-time economy safe for everyone.

The operation, Co-ordinated by Islington Police Licensing team, brings together uniformed Police Officers, plain clothes officers, Operation Nightsafe team, Local authority officers and venue security staff.

The joint aim is to reduce violence, robbery and drug offences and VAWG in the NTE areas identified as having the highest crime rates.

Officers are deployed to these known hotspot areas each Friday and Saturday night. The Police Licensing team hold a street briefing every Saturday night at various points across the borough. Venue management and security are invited to attend along with Police officers and Operation Nightsafe officers to share information and discuss current crime trends. This has proved to be an excellent method of promoting partnership working and creating a ‘one team’ approach to tackling crime and disorder.

The current deployment areas are Upper Street and Essex Road. Later in the evening resources are moved to deal with issues surrounding the larger Nightclubs that have significant issues with groups selling Nitrous Oxide canisters. These groups are known to be involved in robbery, drug and violence offences.

We aim to deploy 1 Sergeant and 6 PC’s every Friday and Saturday night on a 10pm to 6am shift. These numbers are not always achieved owing to a lack of volunteers to work overtime. LBI have part funded this tasking with funds from the Late-Night levy.

Current Operation Leuctra tactics;

- Dispersal zone. We are implementing a dispersal zone every weekend from 10pm to 10am on the Sunday. This DZ covers the hotspot areas around our larger Nightclubs including Fabric, XOYO and Q’s.
- Street briefings. We continue to conduct a street briefing every Saturday night on Upper Street. Venue staff and security are invited to join operation Leuctra officers and Operation Nightsafe staff in a street briefing delivered by a Police Licensing officer.
- Cross boarder working with Hackney NTE resources. We have linked in with the Hackney NTE Policing operation. Op Hackney Nights. Throughout the year we conducted a joint street briefings with Police officers from both sides along with Op Nightsafe and Hackneys Council enforcement team. Patrols to deal with criminals who target NTE customers conducted on both sides of borough borders.

- Cross boarder working with City of London Police. Joint patrols to deal with the criminality on both sides of the border close to Fabric Nightclub. Has resulted in 2 significant arrests on 17th June where suspects for an assault on Fabric staff were arrested with the assistance of CoLP.
- Work conducted with the MPS dept of Media and Communications. Bespoke crime prevention material with a new agreed message within the 'Look up Look Out' strategy to target victims in relation to the risks posed by gangs who target victims and their mobile phones to gain access to bank and Cryptocurrency accounts. We have developed large 'barrier sleeves' containing the crime prevention message for use on venue crowd barriers.
- Additional work carried out with DMC to develop social media strategy. Facebook, Instagram and Tiktok used to target potential victims ahead of them attending clubs. Digital ad van also used to display message in environs of venues.
- Adopt a Pub scheme. An officer from CN safer Neighbourhood team has been allocated to each of the 7 venues which create the largest volume of crime reports. The officer will be an additional source of support to the venues to assist them in reducing crime. The crimes relevant to the SNT officers are largely theft offences. Licensing officers remain closely linked to each venue.



Week of action during Fresher's week (Sept 23)

Islington Police Licensing team have conducted a cross border week of action with Hackney officers to tackle an increasing trend in theft and robbery offences linked to Night Time Economy venues.

The operation coincided with Fresher's week and sought to deter and detect offenders as well as raising awareness amongst students of the risk of distraction theft and how to stay safe within the NTE. Officers from CN and CE BCU's targeted patrols around XOYO nightclub owing to suspects preying on students and young customers leaving the venue.

The operation aimed to tackle an increase in theft and robbery offences reported around Nightclubs. The thieves are known to target vulnerable customers leaving venues, often befriending them before inviting them to swap social media details or phone numbers in order to take possession of the phone. Suspects would then steal the phone and often threaten violence if challenged. On some occasions, victims report fraudulent activity from online bank accounts including purchases and transfers of money.

The operation which saw activity on Monday 25th, Friday 29th and Saturday 30th September involved officers from Islington and Hackney Police along with partners from Islington Local authority, British Transport Police, Islington Nightsafe wardens and XOYO security and management. The operation was observed by Councillors from Islington Local authority.

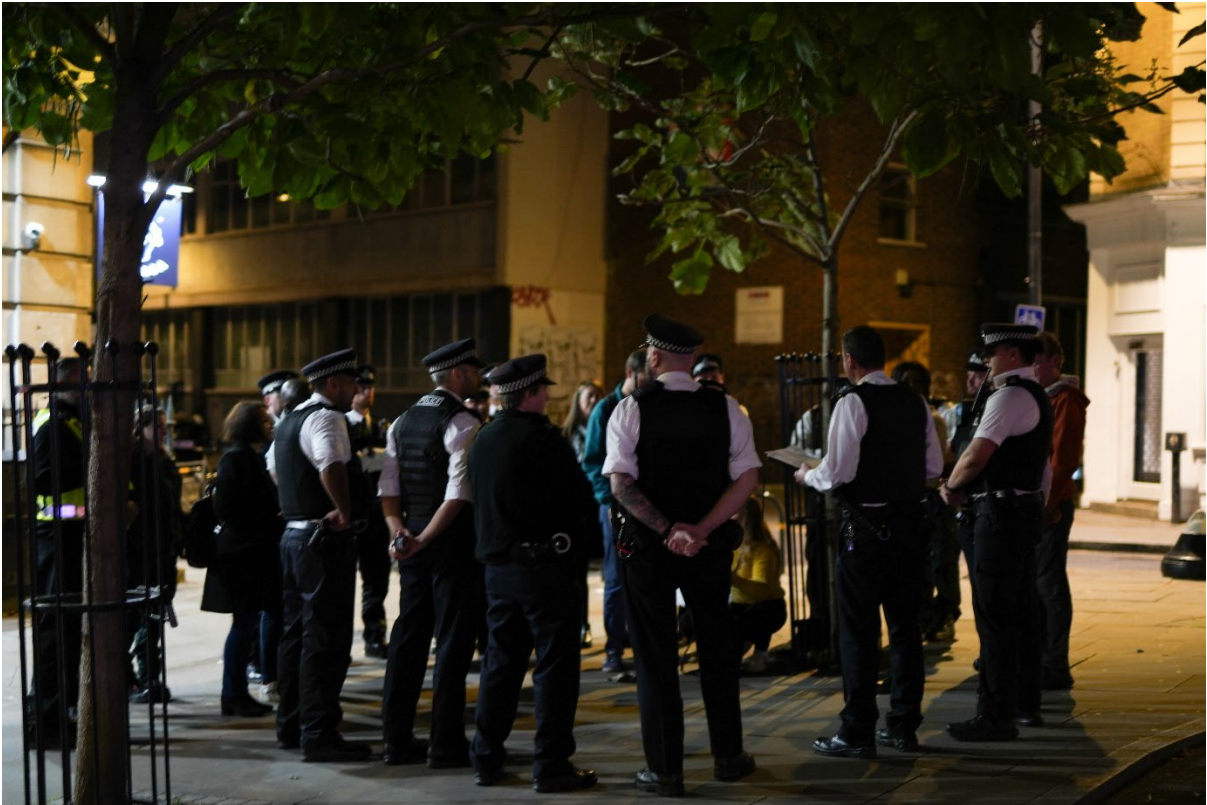
The campaign was supported by refreshed '*Look Up Look Out*' messaging focusing on this unique crime type. The new crime prevention material was produced by the Mets Communication and Engagement team following consultation with local officers. The fresh messaging was displayed on crowd barriers, digital in-venue screens, leaflets and on a Multi Media van tasked with patrolling the area.

Officers conducted high visibility patrols to deter potential offenders and reassure those in the area on the night. They spoke to students outside the club, providing reassurance and educating them and other young people, including those who might be going out in London for the first time, on how to remain safe when on a night out with friends.

By the end of the week, officers had engaged and advised 550 people about personal safety and made their presence known to several potential offenders.

The officers received a warm reception from the late-night revellers and were thanked for their presence. Operation Leuctra will continue to work with partners to focus on this area along with other late night venue locations targeted by those seeking to commit crime.

Digital content posted on social media highlighting operation -
<https://twitter.com/MPSIslington/status/1712430104259744109>





Op Leuctra generated arrests in 2023 – 22

Highlights include:

- 13th January – Arrest for assault on Nightsafe officers were intervening in a disturbance on Essex Road
- 22nd January – Arrest for being drunk and disorderly on Essex Road
- 4th February – Arrest for making threat to Kill on Cowper Street
- 18th March – 2 arrests made following 2 males being identified as responsible for a series of mobile phone thefts inside a nightclub
- 25th March – 2 arrest made for assault and drug possession on Essex Road
- 7th April. Male located and detained by officers on patrol on Taberbacle Street. Responsible for a serious assault in a nearby pub. Arrested for GBH.

- 8th April. Arrest for possession with intent to supply Nitrous Oxide on Charter house Street
- 8th April – Arrest for affray and common assault following a domestic disturbance on Essex Road.
- 29th April. Charterhouse Street. Affray outside involving patrons. 5 persons arrested.
- 2nd June. Chapel Market. Reports to a male armed with a knife. Suspect located and searched. Found in possession of cannabis and arrested.
- 17th June. Paul Street. Male arrested for drug possession following a stop and search
- 17th June. Male arrested at Fabric for sexual assault of a female.
- 18th June. Call to an Airbnb party with 30-40 youths in a flat refusing to leave. Dispersed by Op Leuctra officers. Search of the property after, large machete found hidden under the bed.
- 24th June. Officers made aware of a recent robbery by XOYO security. Victim dealt with and suspect subsequently identified and arrested.
- 24th June. Pickpocket of phone reported to officers. Suspect located near to XOYO and arrested.
- 14th July. Patrols around XOYO resulted in 9 large canisters of Nitrous Oxide being seized by Police and disposed of. Males causing ASB dispersed from area.
- 15th July. Vehicle stop on Tabernacle Street. Nitrous Oxide seized and occupant arrested as part of an ongoing investigation into domestic violence.
- 22nd July. Officers detained a male near to Upper Street licensed premises who was suspected to be in possession of a knife. No knife found and male dispersed.
- 28th July. Vehicle stop in Paul Street, near to NTE venue resulted in a male being arrested for possession of an offensive weapon and a vehicle being seized.
- 6th August. Male arrested for Taxi touting near to Paul Street. A vulnerable lone female was found in the vehicle and safeguarded by Police.
- 11th and 12th August. Increased presence around Fabric owing to venue being threatened by criminal groups who sell Nos. Groups dispersed throughout the weekend which saw a significant decrease in crime and ASB.

- 4th November. Male arrested for racially aggravated public order offences on Upper Street



Parkguard Ltd

Service provider to Local Authorities & Police

Working in partnership with



ISLINGTON



**METROPOLITAN
POLICE**

Operation Nightsafe

Creating safe social environments

Summary Review

1st November 2022 - 31st October 2023



Operation
Nightsafe

ISLINGTON

Operation Nightsafe

Summary Review

1st November 2022 - 31st October 2023

Contents

Background & Service

Patrol Medic Overview

Welfare

NTE Violence & Disorder

Information &
Intelligence Gathering

Reporting Overview

This review is of the Parkguard Team's actions only and excludes Police, Council and Licensing Team data or outcomes generated, either independently by them or as result of follow-up action enabled by this team (such as criminal or civil prosecutions, imposing regulation/ conditions or other subsequent interventions).

Background and Service

In 2014 Islington adopted the power to impose a Late Night Levy on all businesses selling or supplying alcohol between midnight and 6am. The amount of levy payable is prescribed by central government to help improve the Night Time Economy (NTE).

By law 70% of the income generated by the levy must be allocated to the Police to spend on activities to reduce crime and disorder associated with the late night sale and consumption of alcohol. The remaining 30% will be retained by the Local Authority to spend on activities to improve the local NTE and the environment in which these activities are concentrated.

In Islington, the Police and Council, with support from the Mayor's Office for Policing and Crime (MOPAC), have agreed to pool the levy income and to deliver a dedicated, multi-agency partnership called Operation Nightsafe. The team consists of Police and Council Licensing, the Parkguard Nightsafe Patrol Team, Special Constables and Policing resources from Safer Neighbourhoods.

The Parkguard element of Operation Nightsafe consists of a Police Accredited, street-based tasking team, delivered by Parkguard on behalf of Islington Council and working in partnership with the Metropolitan Police in a support capacity. The overall aim of this four person team is to provide a dedicated service at key times to aid in tackling NTE issues through presence patrolling, safeguarding, information and intelligence gathering, as well as enforcement where required. The primary purpose of this operation is to support the public, licensees and other partner agencies in the overall management of public disorder, crime and other forms of nuisance associated with NTE and to minimise risks to public safety and impact on the wider community.

Supportive Action & Promotion of Safety

Assisted member of the public in need	200
Health & welfare check People checked due to a concern for safety	244
Medical Support Provided *Note - Ambulance called to 27	130
Crime Prevention Advice Provided to people found in a vulnerable position	121
Body worn video footage made available Provided to council, police and partners for evidence, enforcement action and intelligence gathering	680

The reasons for checking on welfare ranged from serious assaults to inebriation

The area of responsibility is borough wide and the deployment is determined on a nightly basis by intelligence-led tasking, call response and Police team briefings.

The team provides a dual function service, combining medical and policing support that is focused around key crime generators such as off-licences, pubs, clubs and high footfall streets for NTE. In addition to general crime and anti-social behaviour their role also includes addressing licensing, street trading and taxi touting issues. To deliver this role, Parkguard Officers are appointed persons empowered to act on behalf of the Local Authority in an enforcement capacity, as well as utilising delegated powers as part of the Metropolitan Police Community Safety Accreditation Scheme under the Police Reform Act.

“The team provides a dual function service, combining medical and policing support that is focused around the Night Time Economy.”

**Winners of the first
Metropolitan Police
Police and Security (PaS)
London Awards**
Partnership & Engagement category



Operation Nightsafe

Patrol Medic Overview

Due to the nature of the role being that of proactive patrolling, the team predominantly find issues or arrive on scene just as an incident unfolds or it is coming to a conclusion.

Over this period the Patrol Medic has attended to:

31	Patients requiring treatment, solely due to intoxication
3	Patients with traumatic injuries requiring specialist treatment
14	Patients with significant head injuries
7	Patients with serious facial injuries
20	Minor injuries
6	Reports of spiking

Parkguard needed to ensure that the team are equipped to deal with a wide variety of incidents until other relevant service can be alerted and arrive on scene. Given that our focus is the night time economy, we are often first on scene to incidents that involve injury or concern for safety through alcohol, drug use, trips and falls, assaults and so on. Based on this, we anticipated that we would require a medical element to the patrol team, to ensure that we can give the best immediate response to all, to safeguard and support them. Over this period, the Patrol Medic has provided care on **79** occasions to those either working in or enjoying Islington's NTE.

We have also further invested in training and equipment over the period to provide an enhanced level response and to enable the best possible care until the arrival of the London Ambulance Service (LAS) or other appropriate services.

As a by-product this has also enabled us to help reduce unnecessary demand on the LAS by resulting calls that did not require an emergency response. This is due to calls being made due to poor judgement or panic and often from the callers also being drunk. Through assessment and intervention of a Medic, we were able to cancel or prevent the dispatch of **39** ambulances that could be redeployed to life threatening emergencies and which prevents a minimum spend of approximately **£9,906**.

The Patrol Medic has also provided definitive treatment to **79** patients on the street that would have required attendance to an Emergency Department or Urgent Care Centre, again preventing a minimum spend of approximately **£8,532**

(source: NHS evidence.nhs.uk, NICE, kingsfund.org.uk).

Medical Support

Examples of good work:

- The team were alerted to a male who was found in the street with a serious head injury, The male lacked capacity to make any decisions about his treatment and was not aware on how he became to be injured. **Medical support was provided by the Medic and the patient was taken to the Royal Free Hospital for treatment.**
- The team responded to call from a venue due to reports of a homeless male attempting to gain entry. The team identified that the male was in a bad condition and lacked capacity and had a broken leg. **The medic provided initial care to the male before transporting him to hospital for further treatment.**
- The team was called to respond to an individual who was identified to have overdosed with a recreational drug. The team called for an ambulance without delay. The patient was struggling to breathe and reported their throat was closing up. **The medic provided early intervention medical support including adrenaline allowing the patient make an on scene recovery and avoid a hospital trip.and avoid a hospital trip.**
- Whilst driving between locations, the team identified an RTC with police at the scene. A cyclist had been hit by a car and had sustained injury to his abdomen. **The medic provided initial first aid before the ambulance arrived and transported him to hospital for further treatment.**
- **The team responded to a call from a venue due to a collapsed female as a result of a potential spiking.** The medic provided initial support while evaluating the females condition, it was decided due to their vitals that there was a suspected spiking and the female was transported to the hospital by the British Transport Police.
- The team were called by a venue due to reports of a male who was unable to walk. After providing initial care to the male, the medic called for an ambulance however due to the lack of resources they were unable to attend. **Due to the nature of the males condition, the patrol team transported the male to hospital where he received urgent treatment and the patrol teams were thanked.**
- Team were called to a venue where a female who was having a seizure. While in their care the female continued to have seizures so provided initial care and called for an ambulance. The medic provided assistance to the ambulance crew who took the female to hospital for further treatment. **The ambulance crew thanked our medic for their quick actions.**



Welfare Overview

A core function of this team is to safeguard people who become vulnerable through circumstances, excess alcohol or drug and to prevent them becoming victims of crime or injured or worse.

These individuals are normally located in the immediate vicinity of licensed premises or more isolated locations where they have wandered off before their situation deteriorates.

The support provided is very wide ranging, but the most regular types of support were:

- Finding people alone, vomiting and vulnerable. The Patrol Team assisted them in cleaning themselves up, providing medical assessment, water and refuge at the vehicle until transport home can be secured or guardians located. The teams have often also provided disposable bowls and waste bags for the onward journey and assisted with cleaning the scene due to bodily fluid left outside front doors etc.
- People who are disorientated and have become lost while trying to make their way home or are unable to get themselves to a transport hub as they are incapacitated through excess alcohol. Many of these also had minor cuts or abrasions from falls or stumbling along building walls. Cleaning wipes and plasters were often provided but they did not want to be treated officially by the Patrol Medic so these are not included within the medic returns.
- Locating people unconscious or asleep or suffering exhaustion at bus stops, in adjacent residential areas or in side streets and alley ways as a result of the influence of alcohol and or drugs.

69

Adult
safeguarding
issues

244

Welfare
checks



Welfare support provided

	Male	%	Female	%
Medic Support	13	23.6%	11	42.3%
Ambulance Called	29	52.7%	11	42.3%
Taken to hospital	12	21.8%	13	11.5%

Intervention categories

	Male	%	Female	%
Alcohol intoxication	13	23.6%	8	30.8%
Personal injury	24	43.6%	10	38.3%
Victim of crime	8	14.5%	6	23.1%
Drug intoxication	10	18.2%	2	7.7%

Victims of crime

	Male	%	Female	%
Assault	19	63.3%	10	33.3%
Theft	11	36.7%	11	36.7%
Spiking	0	0.0%	6	16.7%
Sexual Offences	0	0.0%	4	13.3%





“

The Nightsafe team remain an essential part of the Islington NTE Policing plan. The team work closely with Police resources and play a crucial role in supporting licensed premises, providing a visible presence to deter crime, reassure the community and deal with lower level ASB and medical incidents.

The Nightsafe team frequently contribute to Policing operations within key crime hotspots and are a source of invaluable intelligence in relation to crime trends.

The Metropolitan Police Licencing Team

”



NTE Violence and disorder

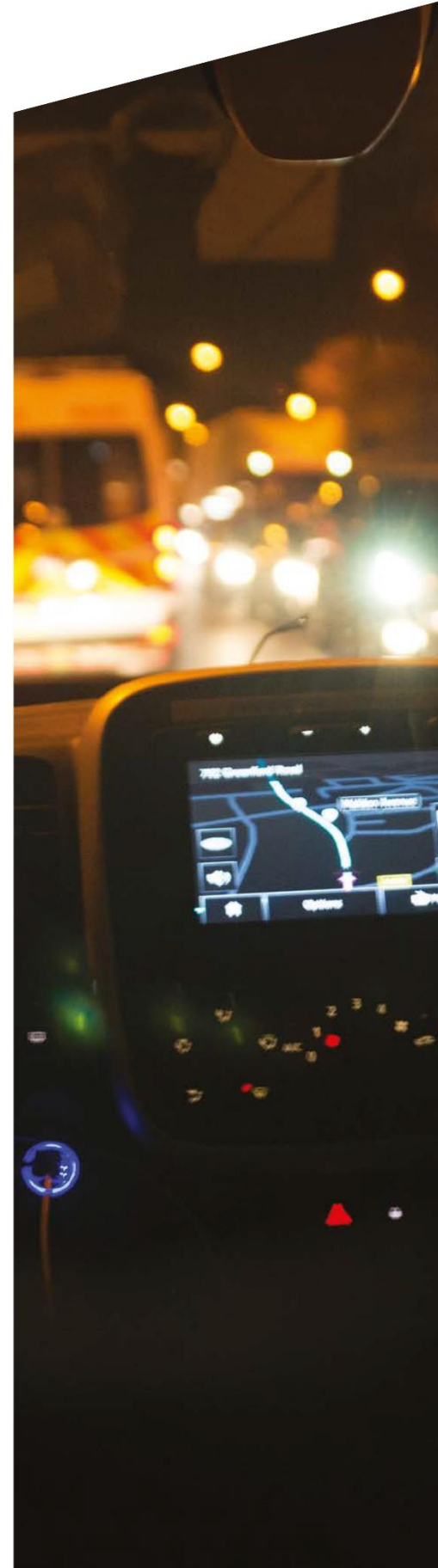
In the period 01/11/22-31/10/23 the team have dealt with 401 incidents involving violent or aggressive behaviour within a NTE setting and the majority included multiple individuals and people under the influence of alcohol and/or drugs.

The specific delivery of this service is complimentary of borough policing, but intrinsically different in aspects of deployment. This enables the team to apply predominantly proactive patrol techniques and therefore focus on early intervention, through being present at the time of potential escalation to violence.

This early prevention means the team intervene through verbal resolution or physical interventions, which reduces the number of actual assaults. The large number of incidents shown below where violence was either threatened or intimated would more often than not have been added to the total number of assaults if not for the team's intervention and de-escalation. Equally where there were people already found starting to physically engage in a fight, the intervention has served to prevent these escalating and then resulting in serious injury. Of the **401** incidents there were **25** confirmed and processed arrests by the Police.



- Assault
- Assault on PG officers
- Harassment/ Alarm or Distress
- Public Order Offences
- Domestic Abuse
- Sexual Offences



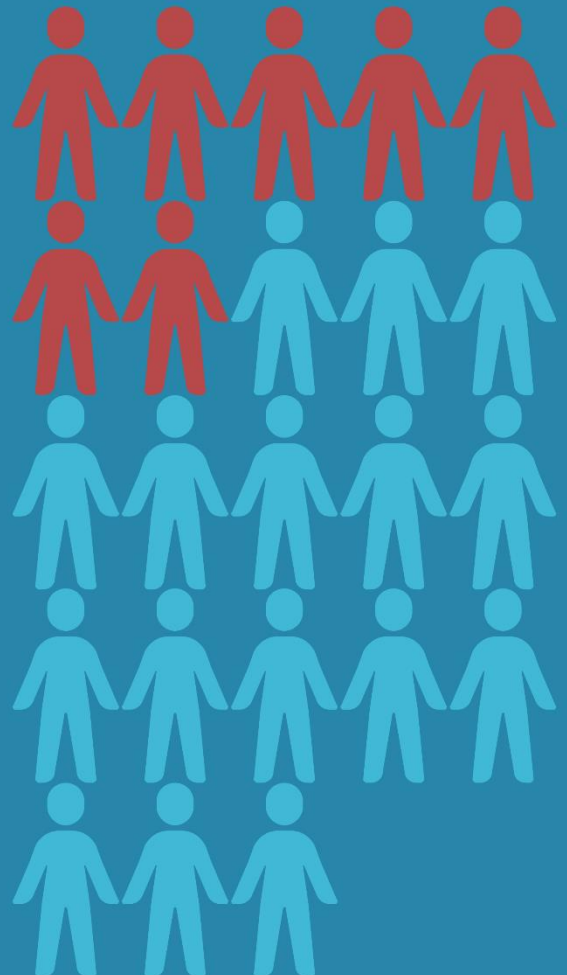
Enforcement Action

The majority of arrests were as a result of varying types of assault including domestic abuse

Enforcement action taken	
Patrol generated arrests	25
Person (s) Requested / directed to leave/ disperse	222
Person (s) Warned & Advised at scene due to conduct	369
Suspects, Offenders and relevant issues brought to the attention of the Police	81
Person (s) Warning via Report/other (35) and Relevant Person Informed (84)	92
Area Search – For suspect or witness appeal	126
Persistent / prolific offender detected, Monitored & Reported	8

Examples of patrol generated arrests of note include:

- A male who was arrested for domestic related assault on his girlfriend at a venue.
- A female who was arrested criminal damage following a spate of anger resulting in breaking a shop window.
- A male who was arrested for possession of a bladed article following reports of a phone snatch.
- A female who was arrested for ABH following an altercation with door staff resulting in him being bitten.
- A male who was arrested for criminal damage after damaging cars due to being refused entry to a venue.
- A male who was arrested for being in possession of an offensive weapon.
- A female who was arrested for assaulting a member of the patrol team whilst being detained following aggressive behaviour



Liaison, Engagement & Promoting Community Safety

Consistent, familiar liaison and forming trusted relationships are vital to effective information gathering, crime reduction and prevention. It also aids in finding collaborative solutions and delivering tangible, productive support to new and emerging issues. As this team has a far lower call demand than emergency services, they are able to dedicate sufficient time to engagement and liaison.



- Liaised - (Public) For the purpose of reassurance information & intelligence gathering. These are occasions not number of people - Average encounter per visit or specific area patrol 5 to 10
- Liaised - Door Supervisors, Designated Premises Supervisor (DPS) & venue owners and council staff - Occasions not number of people.
- Liaised (Police)

Supportive action & Promotion of safety

Joint police patrol	13
Attended police operation	2
Assisted member of the public in need	200
Body cam footage made available	680
Health & Safety concerns identified	84
Crime prevention advice given	121

Nuisance - Incidents dealt with

Nuisance (Illegal traders)	18
Nuisance (Littering)	185
Nuisance (Licensed premises)	30
Nuisance (Noise complaint)	54
Nuisance (Urinating in public)	12
Nuisance (Youths under 18)	16

Street population related incidents dealt with

Begging	7
Homelessness	25
Disorderly street drinkers	24
Known street drinkers present - No offences	68

Vehicle related incidents dealt with

Vehicle (ASB/Nuisance)	35
Road traffic collision	5
Road traffic offence	20
Suspicious vehicle	156

Drug offences

Drug offence - Possession/ Supply (PWITS)	96
Drug paraphernalia found	131

Acquisitive crime

Theft	21
Robbery	4

"Since the NTE reopening, the partnership working between Police, Council and Operation Nightsafe has been invaluable in reducing crime and increasing safety within the NTE. Nightsafe play a key role in being the eyes and ears on the ground, regularly attending incidents in order to make an intervention to prevent situations escalating. The team attend briefings and share information with the Licensing team every Fri and Sat night. The team have developed professional relationships with nightclub security teams within crime hotspots and regularly provide reassurance and advice."

The Metropolitan Police 2023



Information and intelligence gathering

In the 12 months that this report covers, this single patrol team working 4 days per week, generated patrol reports that totaled 420,036 words of information and intelligence. This creates an intelligence picture which is not only quality assured, but produced in real time after each shift into Council Licensing, Police and Public Protection, which makes the volume usable and of significant value in the overall management and response to NTE.

This is a picture that is unlikely to be held by any other Local Authority/ Police Service when it is then combined with Police calls and Officer reports, Licensing reports and calls to the Council's out-of-hours ASB reporting line. This makes mapping and proportionately and efficiently responding to NTE issues at specific venues and areas, exceptional. This enables a multi-agency collaborative service delivery to encourage a busy and popular NTE and create a safe social environment.

Words of information & intelligence generated:

420,036

Increased presence to promote public safety

Assigned to this service is a marked, dedicated and highly visible vehicle. This serves the purpose of preventing crime and disorder by deterring, disrupting and displacing offending, as well as providing reassurance through high profile presence patrolling. Over this 12 month period this vehicle has travelled 8967 miles, over less than a 9 square mile area, predominately within high footfall areas. This is the equivalent of driving from Zurich to Australia; or the length of the borough, from Archway to Farringdon (via Holloway Road and Upper Street) 2242 times!

Triggers - Total directed attendance	2028
Non-Police tasking visits & requests (self-generated, Council, partners)	1861
Police tasking visits & requests (emails & nightly briefing)	57
Called by ASB Line Control to attend	73
Called by other Parkguard unit	13
Called by Police to attend	16

Breakdown of premises by time and type:

Public Houses



Bars



Nightclubs



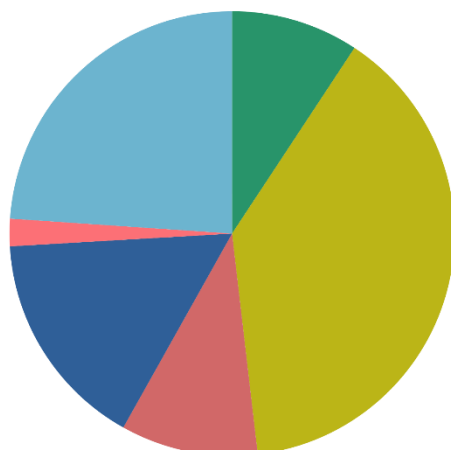
Off licences



Restaurants / Food outlets



Streets, transport hubs & environs of venues *



- Public Houses
- Bars
- Nightclubs
- Off licences
- Restaurants / Food outlets
- Streets, transport hubs & environs of venues

*Relates to visits/occasions where officers may have located individuals in need of support in public areas outside of identified venues.



Ward Coverage 209 days

(Thursday-Sunday inclusive per week)

*Data excludes no ward specified entries recorded under LBI

Ward	% of visits	Number of visits	Number of actions
Barnsbury	5.4%	203	1,269
Bunhill	11.6%	438	3,079
Caledonian	7.1%	268	1,711
Canonbury	0.2%	6	39
Clerkenwell	9.0%	338	2,210
Finsbury Park	3.1%	118	628
Highbury East	1.0%	38	180
Highbury West	0.7%	26	133
Hillrise	0.3%	11	11
Holloway	0.3%	13	116
Hoxton	0.8%	29	188
Islington Ward	22.6%	850	2,969
Junction	0.3%	12	66
Mildmay	0.2%	7	45
St George's	0.2%	8	31
St Mary's	31.2%	1,174	5,177
St Peter's	5.7%	216	1,306
Tollington	0.2%	7	29
		3,762	19,187



In addition to the locations & venues which are all ward based, visits were conducted and incidents dealt with at venues which are not on the provided Islington Licensed Premises Register. Where possible the incident was tagged to the nearest premises on our system. Where we are called to or deal with a premises on a repeat basis then that venue is added to the reporting system. However, NTE problems are by their nature fluid, so numerous incidents occurred away from establishments, on the way to transport hubs and main roads. This necessitated mobile patrols along these routes. The Appendices show the breakdown and statistics around them. In addition to the ward based venues noted above, **850** visits were made under the umbrella location of London Borough of Islington. These would include "Street Patrols" i.e. the vehicle conducted passing patrols around an area rather than just a single street and did attend a given venue. This generic location is also used for "one-off" visits to new premises.

The remaining patrol time has been spent in the vicinity of licensed premises and high NTE footfall roads, addressing NTE related issues generated by people on the way to and from venues. Although is not linked to a venue type, it is of equal importance as the issues are still related to the commercial activity of the collective licensed premises, as a safer area supports better business.

Company Overview

Parkguard provides a wide range of community safety services, predominantly on behalf of Local Authorities and Police, as well as in partnership with various other statutory providers.

Parkguard is a National Police Chief's Council (NPCC) approved company under their Crime Prevention Initiatives and a Police accredited company under the Police Reform Act 2002 for the Metropolitan Police Service, Hertfordshire Constabulary and Essex Police. This Act allows Chief Constables to accredit certain organisations that work within a community safety remit and can meet extremely strict Police criteria. As such, we have become part of the extended policing family under the Community Safety Accreditation Scheme (CSAS). As an accredited organisation since 2005, Parkguard was the first private sector company and currently the only organisation to hold multiple area accreditations which facilitates cross-border working.

By being part of the wider Police family our services are sanctioned by state and our staff have to pass National Police Personnel Vetting and receive enhanced training above the standard industry requirements currently in the private sector. Our staff hold a number of delegated Police powers, not normally available outside of the Police service. We have maintained this standard and exercised these powers appropriately and consistently for over a decade across our service areas. Having a lawful right to act within the public domain, and the ability to exercise these powers means that we deliver tangible, effective action against offenders and our services operate within their own right, generating legitimacy and public confidence. Parkguard has a proven track record of delivering consistent partnership services, which hold value to local communities. By performing these roles collaboratively with the Police, Local Authority and other agencies through information sharing and established processes as a recognised partner, we are able to provide supportive roles that compliment local policing and the work done by partners. This aids in the reduction of a broad range of local issues and provides greater promotion of community safety when responding to public concerns. Due to these services being delivered in this way, as part of the wider Police family, we are subject to statutory control and afforded inclusion, which is often not found with private companies. We deliver our services in line with public service controls, ensuring transparency and accountability which allow protection in terms of delivery standards to the public that our Local Authority clients serve.

Generally our services fall into two main areas:

- 1** The design, implementation and subsequent delivery of public services on behalf of the Local Authority, such as Community Warden Schemes, Parks Patrol Services, Anti-Social Behaviour (ASB) Response Teams, outreach support and Night Time Economy policing support.
- 2** The second is alternative approaches for specific local concerns such as gang exit programmes, youth diversion, outreach/harm reduction, education-based responses and dealing with irresponsible dog ownership and dangerous dogs.

Our main activities within these areas include high-visibility patrolling to deter and disrupt offending and to gather information and intelligence to aid in efficient wider action. These patrols promote community safety by providing early intervention, prevention and by actively targeting and prioritising lower level nuisance and other forms of Anti-social Behaviour. The overall aims of our services are to enable, facilitate and support wider action by the authority and Police to then collaboratively achieve longer term solutions to community issues and also elevate service demand. This enables the Local Authority and Police to address higher priority calls, improve response with appropriate use of resources and also focus on their core responsibilities without being abstracted to action tasks that do not require a Police or higher level response.



Parkguard Ltd

Service provider to Local Authorities & Police
www.parkguard.co.uk

Our Local Authority and Police support services are regulated by the authorities for whom we work to ensure accountability and transparency. As a result many are integrated within existing Local Authority or Police teams in order to deliver tangible results in a complimentary way - as one service, in which all members of the community have open and equal access.

Parkguard is an innovative company, which covers all areas of crime prevention, specialising in partnership approaches to solve problems. Parkguard is not an opportunistic product of austerity or diversifying focus, to capitalise on current perceived fear of rising crime and reductions in policing by the public. Parkguard continues, as intended to be from the start, a community safety service provider. Our core services have been delivered for many years with little change to delivery or role type and are well established within our areas of work.

The company also has a General Security Division which compliments our specific and unique approach outlined above. We have selected a pricing structure for the General Security Division that is competitive within the security industry, placing us in the low to mid-range pricing bracket. However, due to our Police Accredited status, this division is of a higher standard than the industry average to prevent any negative impact on the primary company focus and our reputation. This means clients using our General Security Division are afforded high quality staff and equipment, combined with specialist area policing knowledge, while maintaining low industry prices.

From our unique ways of working, Parkguard has achieved numerous awards. In 2010 we were recognised by Hertfordshire Police for our significant contribution to community safety. In 2012 we received an award from Essex Police for our commitment to community safety and being the longest serving accredited organisation and we also achieved BS ISO 14001.

In 2013 we were awarded by the Metropolitan Police as Partner of the Year and during 2014 we achieved ISO 9001 status and awarded the London Living Wage Mark. In 2015 we achieved BS ISO 18001 and we developed a supportive policing role to aid in managing Night Time Economy issues in partnership with Islington Council & the Metropolitan Police; this type of approach was a national first.

In 2016 we were awarded by the Metropolitan Police Service for partnership & engagement in London at the Police & Security Awards and also received a certificate of appreciation from Ealing Police for our hard work and continued support to the Police and the people of Ealing.

Community Safety Accredited Company

- National Police Chief's Council (NPCC) Approved Company
- Police Crime Prevention Academy "Endorsed"
- Accredited by Essex Police
- Accredited by Hertfordshire Constabulary
- Accredited by Metropolitan Police
- Awarded by Essex Police - Longest servicing CSAS organisation and contribution to Community Safety
- Awarded Metropolitan Police Partner of the Year (NI)
- Awarded by Ealing Borough Commander "For continued work and supporting the Police and people of Ealing"
- Winner of the Vinci Facilities Social Value Generation Award
- Winner of the Metropolitan Police and Security (PaS) Awards for Partnership Working
- Awarded London Living Wage Employer Mark
- Member of City of London Crime Prevention Association
- Armed Forces Covenant Bronze Award – "Proudly Supporting Those Who Serve"

Company Information

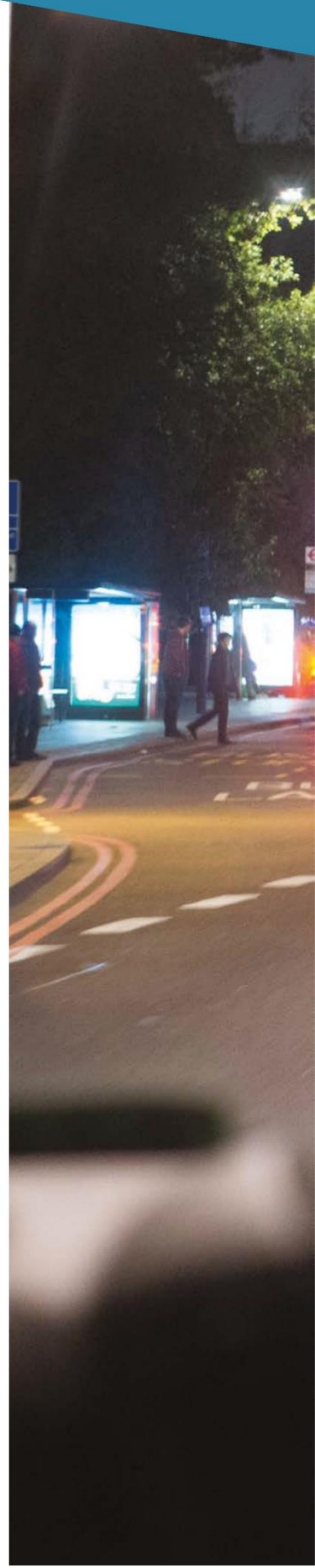
- Company Registration Number: 6157958
- VAT Registration Number: 906598196
- Registered with the Information Commissioner's Office
- BS EN ISO 14001:2015
- BS EN ISO 9001: 2015
- BS EN ISO 45001:2018
- FORS Bronze Accredited 2021 - Fleet Operator Recognition Scheme
- FORS Silver Accredited 2022 - Fleet Operator Recognition Scheme



The Equality Register



Telephone: 0845 467 3023 | Follow Parkguard on Twitter @ParkguardLtd



Late Night Levy Board- 2024

Islington NTE Crime Data 2023

Data from 01/12/2022 – 31/11/2023



**METROPOLITAN
POLICE**

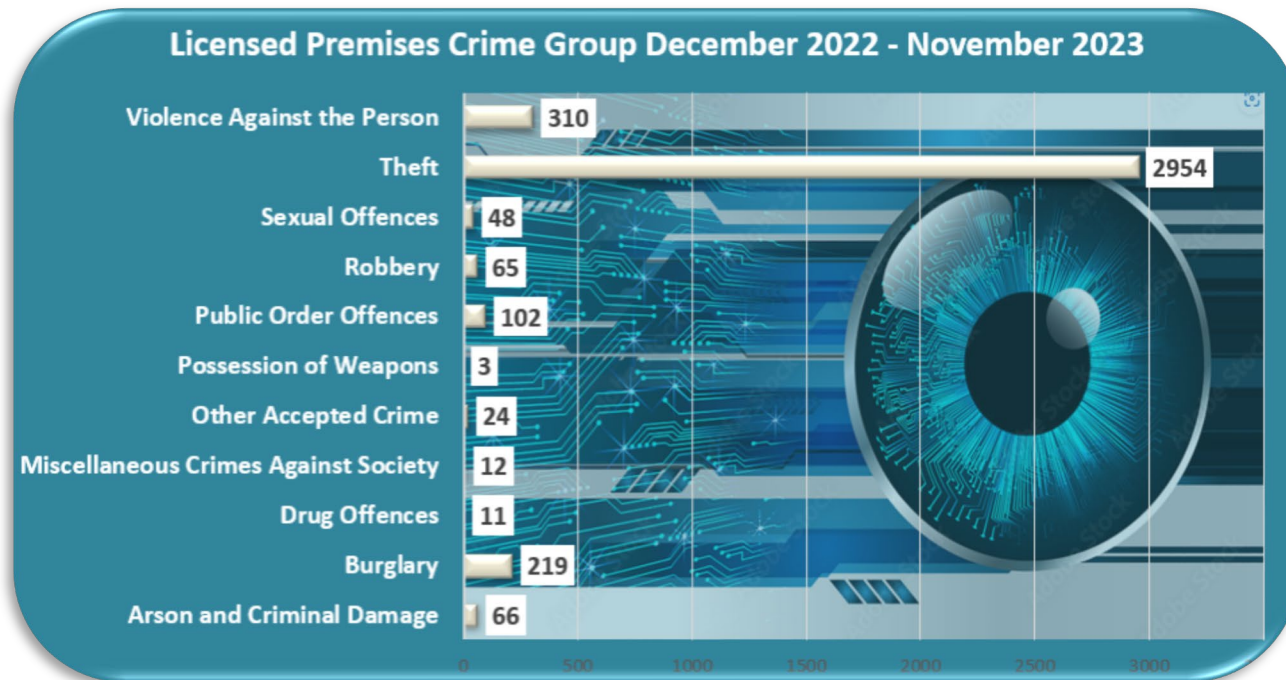


ISLINGTON
For a more equal future

Licensed Premises Crime Breakdown 01/12/2022 – 31/11/2023

- Using the 1-year dataset from December 2022 up until November 2023 for Licensed Premises Crime, *Theft and Handling* remains prevalent but violent crime has reduced slightly in terms of ratio comparison.
- Pubs, bars and nightclubs are hotspots for theft and other offences and occupy 63% of all LP based crime in Islington. This is a 4% ratio reduction from the prior 6 months.
- Restaurants have hosted 21.5% of all LP crime, which is a 2.5% increase.

Venue Type	Count of Location Type
Betting Shop	30
Cafes	316
Cinema/Bingo Hall	29
Off Licence	19
Other Licensed Prems	34
Pawnbrokers	1
Pub/Bar/Nightclub	2431
Restaurants	824
Take Away Premises	102
Theatre/Concert Hall	31
Grand Total	3817



Licensed Premises Crime – By The Hour

- Theft and Handling remains high between 6pm-12am
- Theft and Handling Peaks between 7pm-9pm
- Violence peaks between 10pm-3am
- Arson, Robbery and Burglary peak between 12am – 3am
- Full licensed premises crime peak times highlighted below



Crime Group	00	01	02	03	04	05	06	07	08	09	10	11	12	13	14	15	16	17	18	19	20	21	22	23	Grand Total
Arson and Criminal Damage	8	2	8	2	3		1	1	1			1	3		2	3	3	3	1	7	5	3	3	6	66
Burglary	27	10	28	20	27	9	7	1	6	6		1	17	6	2		3	7	10	2	5	1	7	17	219
Drug Offences		1	3			1	1							1		1				1		1		1	11
Miscellaneous Crimes Against Society	2	1		1										1						2		2	3		12
Other Accepted Crime	4	2		1	1	1									1		1			3	1	9			24
Possession of Weapons	1													1					1						3
Public Order Offences	13	7	6	3	1	1	2	1	2	1	4	1	3	5	10	4	3	3	2	5	7	7	6	5	102
Robbery	9	6	13	6	2	3			1			1	1	6		1	2	3		1	3	1	2	4	65
Sexual Offences	5<	5	5<	5<	5<	5<	5<	5<	5<	5<	5<	5<	5<	5<	5<	5<	5<	5<	5<	5<	5<	5<	5<	5<	47
Theft	44	84	73	42	27	11	22	12	19	4	28	62	32	65	82	60	67	146	379	427	414	369	296	183	2948
Violence Against the Person	26	25	21	14	8	1	3	3	6	4	5	4	9	5	6	11	11	9	14	21	27	16	26	34	309
Grand Total	138	143	156	92	74	29	36	19	35	17	38	73	66	91	102	81	90	173	409	471	464	411	347	251	3806

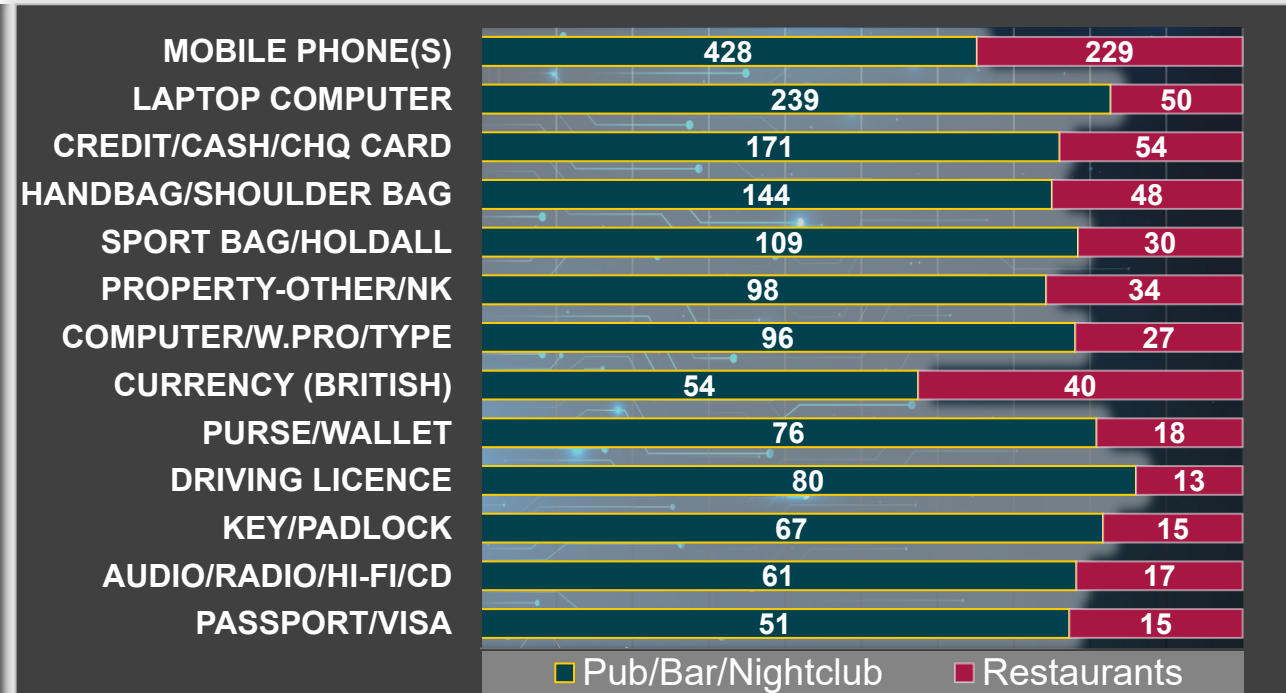
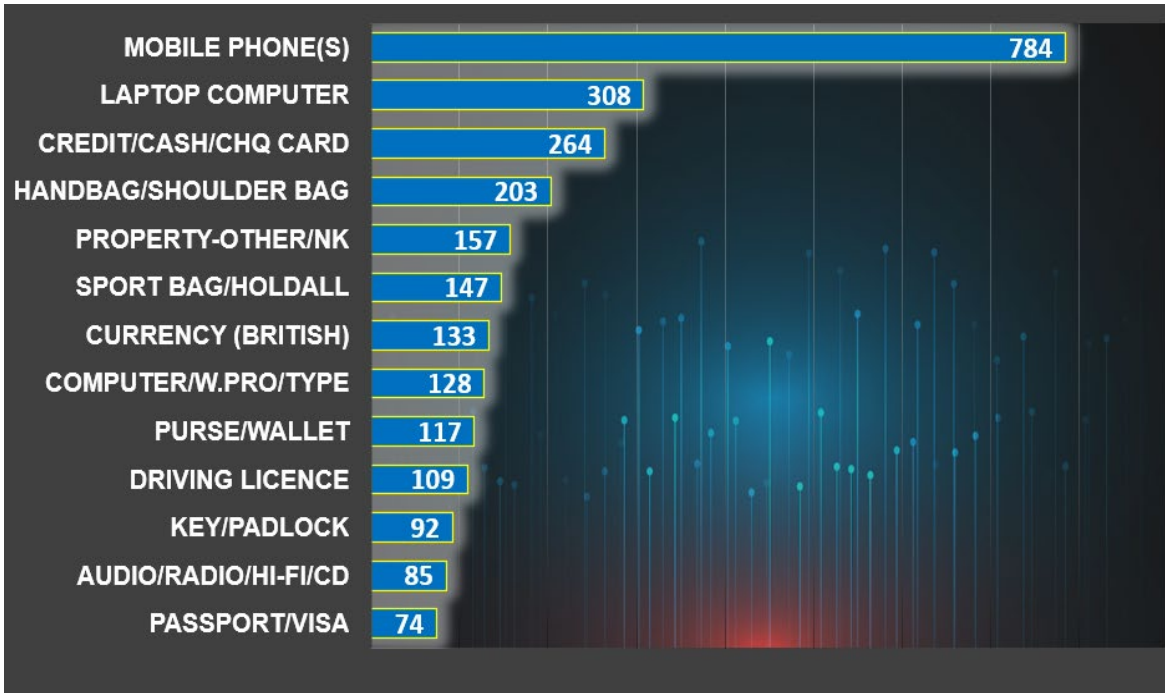
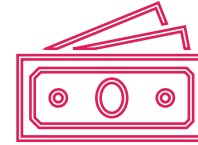
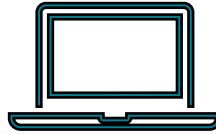


**METROPOLITAN
POLICE**



ISLINGTON
For a more equal future

Licensed Premises Crime – What’s Being Stolen and Where?



- Theft and handling occurs at a rate of around 3-1 in comparison to the two biggest venue categories of Pubs/Bars/Nightclubs and Restaurants.
- Using this ratio, we can see mobile phones and British pounds were disproportionately stolen from restaurants, where they're commonly left on display or unattended.
- Purses/wallet and ID theft happen more commonly at nightclubs and pubs, where similarly bags will be unattended and opportunists will capitalise on this.
- This is the same with laptops, audio equipment, bank cards and other tech or valuables.



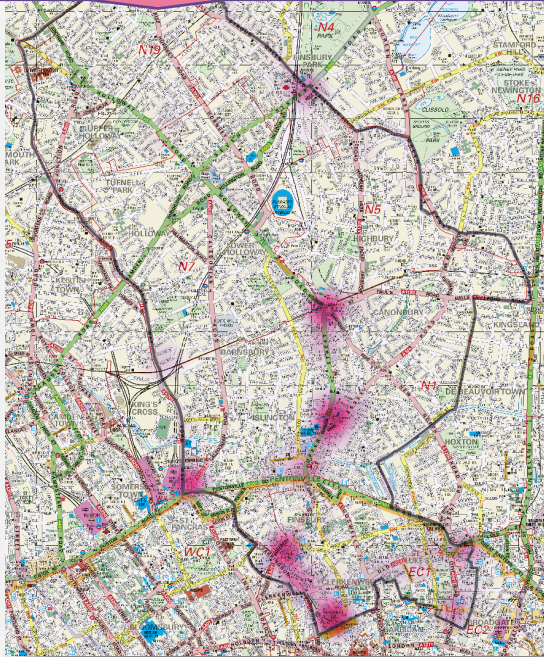
**METROPOLITAN
POLICE**



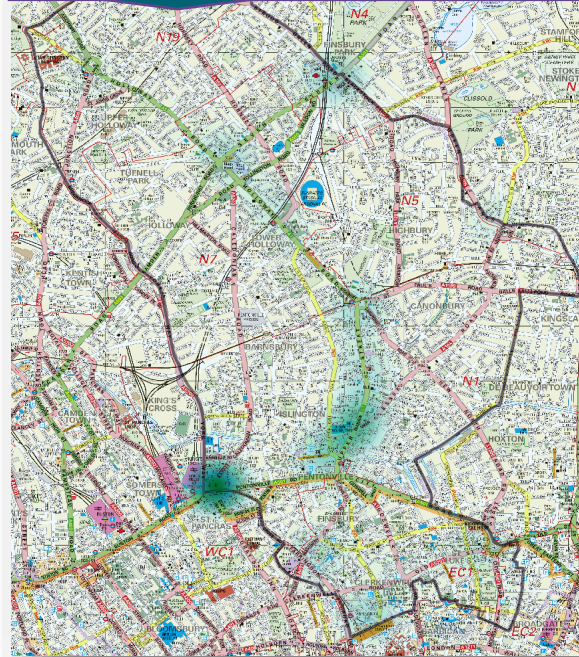
ISLINGTON
For a more equal future

Licensed Premises Crime Heatmaps – Premises Types

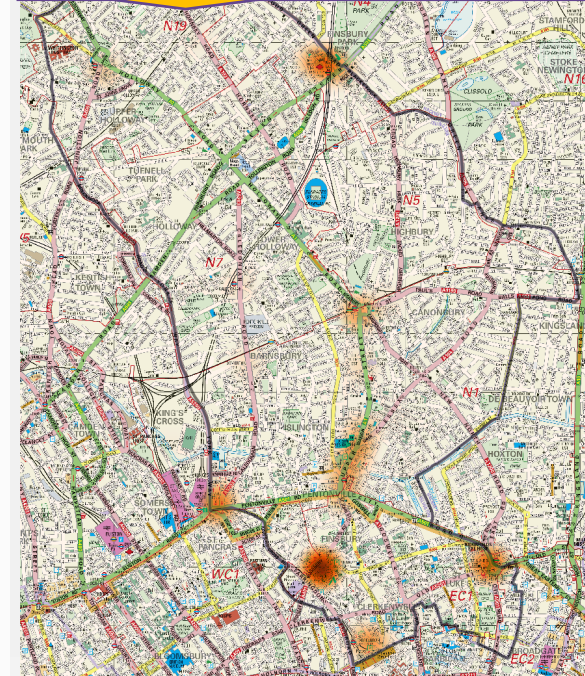
Nightclubs/pubs/bars



Restaurants



Cafes/Coffee Shops



- The South cluster remains a LP crime hotspot, however it's migrated more towards the south-west as opposed to south-east
- Upper Street has presence in all premises types
- Farringdon and King's Cross seem problematic areas for all premises types
- Farringdon, King's Cross, Upper Street, Finsbury Park, Old Street and Highbury were are the main hotspot areas for all LP crime



**METROPOLITAN
POLICE**



ISLINGTON

For a more equal future

Appendix 4

Late Night Levy – Financial Information

1 April 2022 to 31 March 2023

Income

Levy Payments received from Late Night Licence holders	£459,551
--	----------

Expenditure

NTE Policing and Nightsafe Patrol Service	£401,481
---	----------

Surplus carried forward to 2023/24	£58,070
------------------------------------	---------

1 April 2023 to 31 March 2024

Estimated Income	£511,115
------------------	----------

Estimated Expenditure	£453,000
-----------------------	----------